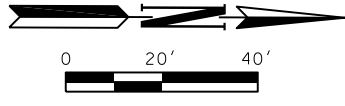


REVISIONS		
NO.	DESCRIPTION	DATE



CONTRACTOR SHALL BE RESPONSIBLE FOR ADJUSTING THE SIGNAL HEADS TO THE CENTER OF THE LANES BASED ON THE PHASE OF CONSTRUCTION, AND ADJUSTING THE VIDEO DETECTION AS NEEDED.

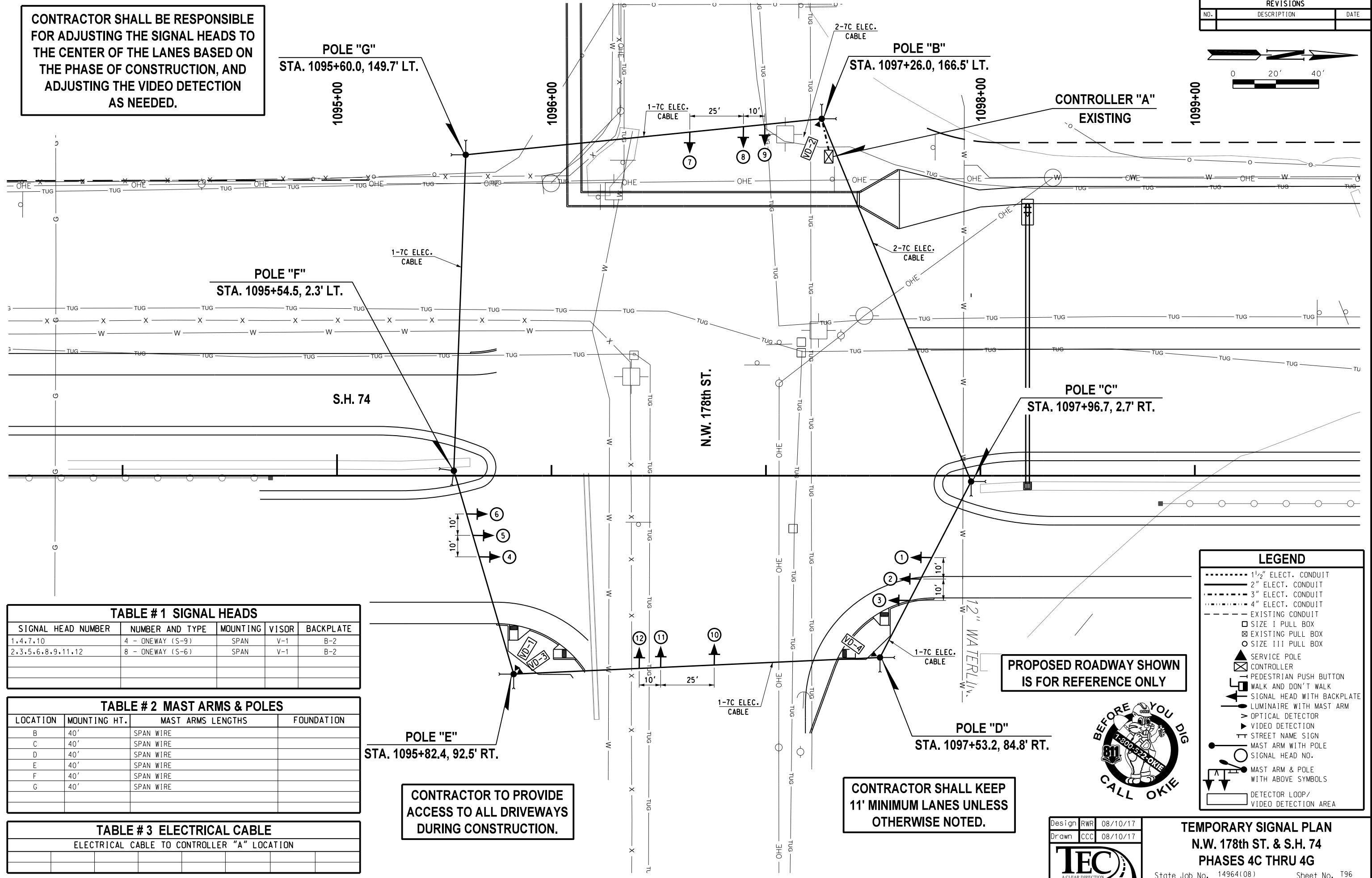


TABLE # 1 SIGNAL HEADS

SIGNAL HEAD NUMBER	NUMBER AND TYPE	MOUNTING	VISOR	BACKPLATE
1,4,7,10	4 - ONEWAY (S-9)	SPAN	V-1	B-2
2,3,5,6,8,9,11,12	8 - ONEWAY (S-6)	SPAN	V-1	B-2

TABLE # 2 MAST ARMS & POLES

LOCATION	MOUNTING HT.	MAST ARMS LENGTHS	FOUNDATION
B	40'	SPAN WIRE	
C	40'	SPAN WIRE	
D	40'	SPAN WIRE	
E	40'	SPAN WIRE	
F	40'	SPAN WIRE	
G	40'	SPAN WIRE	

TABLE # 3 ELECTRICAL CABLE

ELECTRICAL CABLE TO CONTROLLER "A" LOCATION				

CONTRACTOR TO PROVIDE ACCESS TO ALL DRIVEWAYS DURING CONSTRUCTION.

CONTRACTOR SHALL KEEP 11' MINIMUM LANES UNLESS OTHERWISE NOTED.

PROPOSED ROADWAY SHOWN IS FOR REFERENCE ONLY

LEGEND

- 1 1/2" ELECT. CONDUIT
- 2" ELECT. CONDUIT
- 3" ELECT. CONDUIT
- 4" ELECT. CONDUIT
- EXISTING CONDUIT
- SIZE I PULL BOX
- ⊠ EXISTING PULL BOX
- SIZE III PULL BOX
- ⊠ SERVICE POLE
- ⊠ CONTROLLER
- ⊠ PEDESTRIAN PUSH BUTTON
- ⊠ WALK AND DON'T WALK
- ⊠ SIGNAL HEAD WITH BACKPLATE
- ⊠ LUMINAIRE WITH MAST ARM
- ⊠ OPTICAL DETECTOR
- ⊠ VIDEO DETECTION
- ⊠ STREET NAME SIGN
- ⊠ MAST ARM WITH POLE
- ⊠ SIGNAL HEAD NO.
- ⊠ MAST ARM & POLE WITH ABOVE SYMBOLS
- ⊠ DETECTOR LOOP/VIDEO DETECTION AREA



Design RWR 08/10/17
 Drawn CCC 08/10/17



TEMPORARY SIGNAL PLAN
N.W. 178th ST. & S.H. 74
PHASES 4C THRU 4G

State Job No. 14964(08) Sheet No. 196

08/10/17 G:\OP\Projects\1662B_S.H. 74 @ N.W. 178th.NW 182nd & NW 206th\CAD\178TH_PHASE_4C.dwg